



## Sheather's Sugar Flotation Solution

*Find more eggs!!*

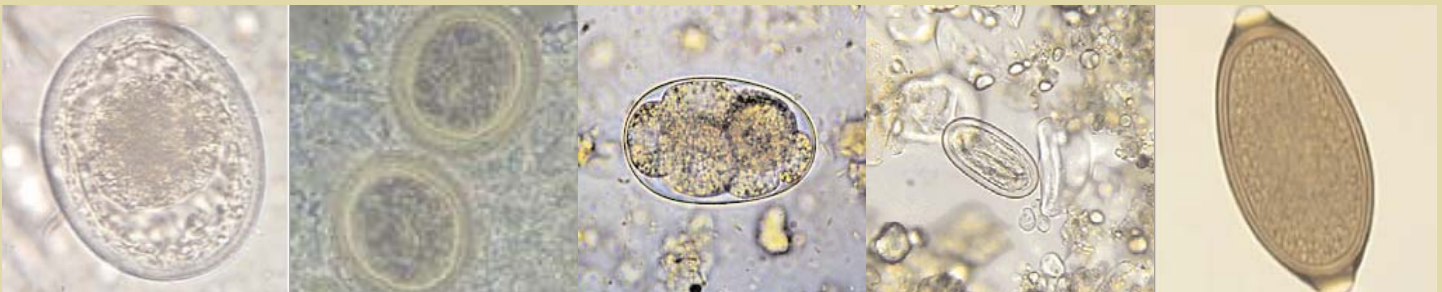
Recent studies have proven that centrifugation of fecal samples is far more effective than traditional standing passive flotation. Furthermore, a flotation media must have a higher specific gravity than 1.20 to float many of the common parasite ova.

Sheather's sugar solution has a specific gravity of 1.27 which is high enough to float any ova.

### Common parasite ova specific gravity:

Toxocara Canis	Roundworm	1.09
Ancylostoma	Hookworm	1.0559
Trichuris Vulpis	Whipworm	1.1453
Taenia	Tapeworm	1.2251
Physaloptera	Stomachworm	1.2376

**Recommended by Veterinary Parasitologists**



Toxocara Canis

Taenia

Ancylostoma

Physaloptera

Trichuris Vulpis

### Common Flotation Media:

Zinc Sulfate 1.18 sp. gr.

Sodium Nitrate 1.18 sp. gr.

*Basic Physics: If an ova has a higher specific gravity than the flotation solution, it will not float nor will it be detected. . .*

J-1028 500ml bottle

J-1028g Gallon size bottle

JorVet offers a comprehensive line of fecal centrifugation technique products. From hydrometers to filters we have what you need!!

**Jorgensen Laboratories, Inc.**

2514 Van Buren Avenue, Loveland, CO 80538; (800) 525-5614; www.JorVet.com; Info@JorVet.com